



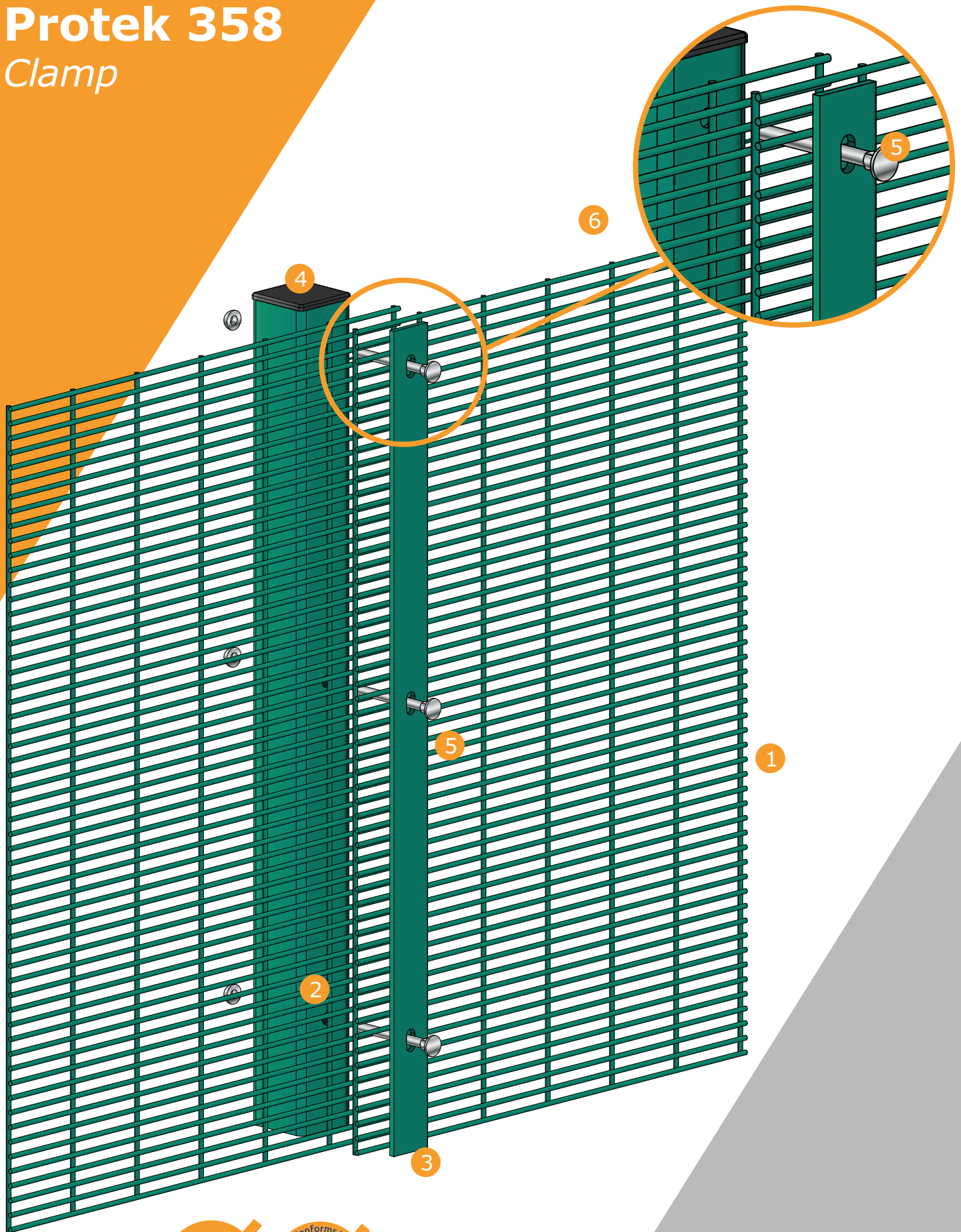
KNIGHT
FENCING LTD



A Guide to Security Fencing

Protek 358

Clamp



For more details on this product please visit
www.knight-fencing.co.uk

Suitable For:

- High-Security Facilities
- Ministry of Defence Property
- Industrial Estates
- Prisons

Protek 358

Mesh panel systems

The Protek 358 mesh flat panel fencing system provides a very high level of security and is used extensively by the Ministry of Defence at high-security sites. The fencing is almost impossible to climb (the narrow apertures prevent intruders from gaining a foothold) and has a good level of visibility and an aesthetically pleasing appearance.

Product and finish standards

- Mesh panel wire manufactured to BS 4102 and galvanised to BS EN 10244-2:2001 class D
- Weld strength is 75% of the minimum tensile strength of the wire (tensile range 540-690 N/m²)
- Post material manufactured to BS EN 10210-2:1997 and galvanised to BS EN 10346:2009
- Panels and posts are powder coated to BS EN 13438:2005 (minimum 100 micron)

Nominal fence height (m)	Panel size height x width (mm)	Overall length of post (mm)	Post size (mm)	Number of fixings	
				Ends/inters (1 clamp)	Corners (2 clamps)
1.2	1,274 x 2,519	1,800	60 x 60	5	10
1.8	1,833 x 2,519	2,450	60 x 60	7	14
2.0	2,011 x 2,519	2,600	60 x 60	7	14
2.1	2,138 x 2,519	2,800	60 x 60	8	16
2.4	2,442 x 2,519	3,100	60 x 60	9	18
2.7	2,704 x 2,519	3,500	60 x 60	10	20
3.0	3,001 x 2,519	3,800	80 x 80	11	22
3.3	3,306 x 2,519	3,800	80 x 80	11	22
4.2	4,208 x 2,519	5,500	100 x 50	15	30
5.2	5,211 x 2,519	6,800	120 x 60	19	38

Subject to change

Posts, clamps and fixings

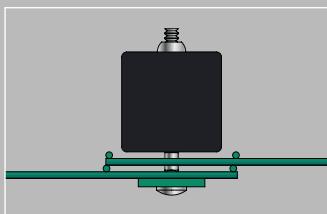
Vandal-resistant fixings help the Protek 358 mesh flat panel fencing system provide a higher level of boundary security. Quality posts and full-length clamp bars secure the panels and allows for variations. The panels can be stepped, helping the fence line to follow the contours of the ground.

Options

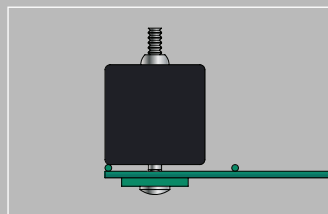
- Threaded insert posts.
- System is available in a galvanised finish using galfan panels
- Metal clips

- 1 Mesh panel :12.5 x 76.2mm - 4mm wire
- 2 Post size varies with height (see table)
- 3 Clamp bar: flat bar 40 x 5mm (full length of mesh panel)
- 4 Plastic cap varies with post size (see table)
- 5 M8 x (varies with post size) cup square security bolt, M8 shear nut, M8 washer

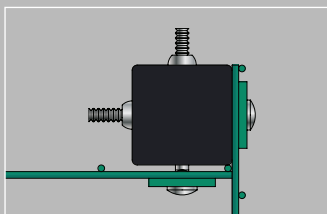
Intermediate post



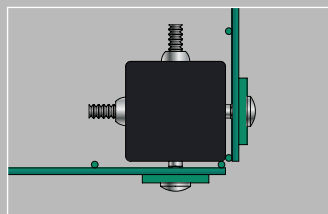
End post



Internal corner post



External corner post



Protek 358 Clamp

Protek 656

Clamp



For more details on this product please visit www.knight-fencing.co.uk

- Suitable For:
- Schools and Colleges
 - Public Places
 - Retail Parks
 - Business Parks

Protek 656

Double wire panel system

The easy-to-install Protek 656 double wire panel fencing system is strong and versatile – it comprises twin horizontal wires (6mm in diameter) welded to a 5mm vertical wire. The fencing panels are fixed to posts with 40mm x 5mm clamp bars, providing an additional layer of security.

Posts, clamps and fixings

Vandal-resistant fixings help the Protek 656 double wire panel fencing system provide a higher level of boundary security. Quality posts and full-length clamp bars secure the panels and allow for variations. The panels can be stepped, helping the fence line to follow the contours of the ground.

Product and finish standards

- Mesh panel wire manufactured to BS 4102 and galvanised to BS EN 10244-2:2001 class D
- Weld strength is 75% of the minimum tensile strength of the wire (tensile range 540-690 N/m²)
- Post material manufactured to BS EN 10210-2:1997 and galvanised to BS EN 10346:2009
- Panels and posts are powder coated to BS EN 13438:2005 (minimum 100 micron)

Options

- Panels can be inverted to create flat-top option
- Other heights are available on request

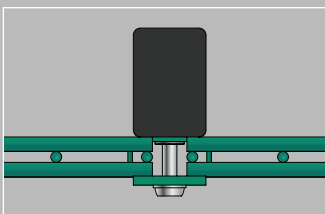
Nominal fence height (m)	Panel size height x width (mm)	Overall length of post (mm)	Post Size (mm)	Number of fixings	
				Ends/inters (1 clamp)	Corners (2 clamps)
1.0	1,030 x 2,506	1,600	60 x 40	4	8
1.2	1,230 x 2,506	1,850	60 x 40	4	8
1.8	1,830 x 2,506	2,400	60 x 40	8	16
2.0	2,030 x 2,506	2,700	60 x 40	9	18
2.4	2,430 x 2,506	3,200	60 x 40	10	20
3.0	3,030 x 2,506	3,900	80 x 40	12	24
3.1*	3,060 x 2,506	3,900	80 x 40	13	26

*Double lift 3.1m high

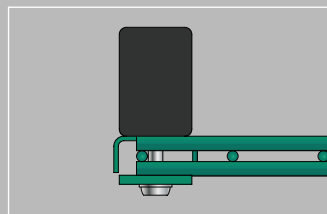
Subject to change

- 1 Mesh panel: 200mm x 50mm mesh size, 1mm x 5mm vertical wire and 2mm x 6mm horizontal wire
- 2 Post size varies with height (see table)
- 3 Clamp bar 40 x 5mm flat bar (full length of mesh panel)
- 4 Plastic cap varies with post size (see table)
- 5 M8 x 40 stainless steel, security screw

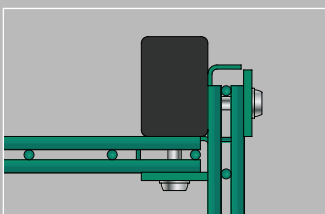
Intermediate post



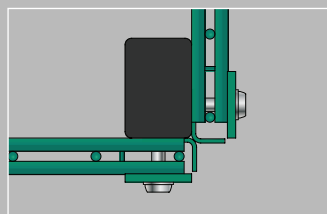
End post



Internal corner post



External corner post



Protek 656 Clamp

Protek 656

Clip



For more details on this product please visit
www.knight-fencing.co.uk

- Suitable For:
- Schools and Colleges
 - Public Places
 - Retail Parks
 - Business Parks

Protek 656

Double wire panel system

The Protek 656 double wire panel fencing system is very versatile and stronger than the Protek single wire systems. This flat panel system uses twin horizontal wires (6mm in diameter) welded to a 5mm vertical wire. The panels are secured to the posts with plastic or metal clips.

Posts, clips and fixings

Vandal-resistant fixings help the Protek 656 double wire panel fencing system provide a reasonable level of boundary security. Quality posts and clips secure the panels and allow for variations. The panels can be stepped, helping the fence line to follow the contours of the ground.

Product and finish standards

- Mesh panel wire manufactured to BS 4102 and galvanised to BS EN 10244-2:2001 class D
- Weld strength is 75% of the minimum tensile strength of the wire (tensile range 540-690 N/m²)
- Post material manufactured to BS EN 10210-2:1997 and galvanised to BS EN 10346:2009
- PPanels and posts are powder coated to BS EN 13438:2005 (minimum 100 micron)

Options

- Choose from plastic or metal clips
- Panel can be inverted to create flat-top option
- Other heights are available on request

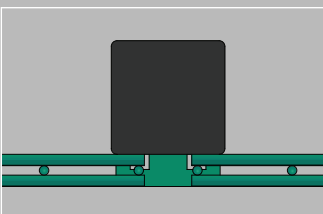


Nominal fence height (m)	Panel size height x width (mm)	Overall length of post (mm)	Post size (mm)	Number of clips	
				Per post	Per corner
1.0	1,030 x 2,506	1,600	60 x 60	3	6
1.2	1,230 x 2,506	1,850	60 x 60	4	8
1.8	1,830 x 2,506	2,400	60 x 60	5	10
2.0	2,030 x 2,506	2,700	60 x 60	6	12
2.4	2,430 x 2,506	3,200	60 x 60	7	14
3.0	3,030 x 2,506	3,900	60 x 60	8	16

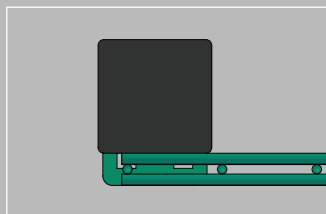
Subject to change

- 1 Mesh panel: 200mm x 50mm mesh size, 1mm x 5mm vertical wire and 2mm x 6mm horizontal wire
- 2 Post size: 60mm x 60mm square hollow section
- 3 M8 x 30 stainless steel security screws
- 4 60mm x 60mm post cap
- 5 Durable plastic clips or metal clips

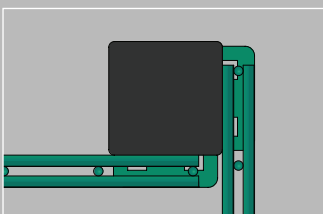
Intermediate post



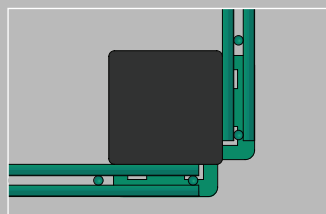
End post



Internal corner post



External corner post



Protek 656 Clip

Protek 868

Clamp



For more details on this product please visit www.knight-fencing.co.uk

- Suitable For:
- Schools, Ball Parks
 - Retail Parks
 - Sports Facilities
 - Business Parks

Protek 868

Double wire panel system

The easy-to-install Protek 868 double wire panel system comprises twin horizontal wires (8mm in diameter) welded to a 6mm vertical wire. It is available with clamp fixings that provide additional security (the panels are fixed to the posts with 40mm x 5mm flat clamp bars).

Posts, clamps and fixings

Vandal-resistant fixings help the Protek 868 double wire panel fencing system provide a higher level of boundary security. Quality posts and full-length clamp bars secure the panels and allow for variations. The panels can be stepped, helping the fence line to follow the contours of the ground.

Product and finish standards

- Mesh panel wire manufactured to BS 4102 and galvanised to BS EN 10244-2:2001 class D
- Weld strength is 75% of the minimum tensile strength of the wire (tensile range 540-690 N/m²)
- Post material manufactured to BS EN 10210-2:1997 and galvanised to BS EN 10346:2009
- Panels and posts are powder coated to BS EN 13438:2005 (minimum 100 micron)

Options

- Panels can be inverted to create flat-top option
- Other heights are available on request
- Anti-vibration rubber backstops are available for all fixings

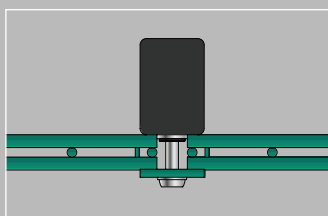
Nominal fence height (m)	Panel size height x width (mm)	Overall length of post (mm)	Post Size (mm)	Number of fixings	
				Ends/inters (1 clamp)	Corners (2 clamps)
1.0	1,030 x 2,506	1,600	60 x 40	4	8
1.2	1,230 x 2,506	1,850	60 x 40	4	8
1.8	1,830 x 2,506	2,400	60 x 40	8	16
2.0	2,030 x 2,506	2,700	60 x 40	9	18
2.4	2,430 x 2,506	3,200	60 x 40	10	20
3.0	3,030 x 2,506	3,900	80 x 40	12	24
3.1*	3,060 x 2,506	3,900	80 x 40	13	26

*Double lift 3.1m high

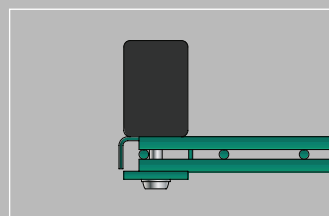
Subject to change

- 1 Mesh panel: 200mm x 500mm mesh size, 1mm x 6mm vertical wire and 2mm x 8mm horizontal wire
- 2 Post size varies with height (see table)
- 3 Clamp bar 40 x 5mm flat bar (full length of mesh panel)
- 4 Plastic cap varies with post size (see table)
- 5 M8 x 40 Stainless steel, security screw

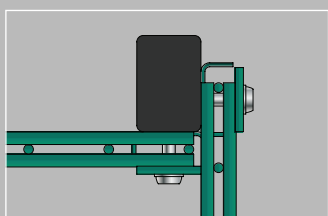
Intermediate post



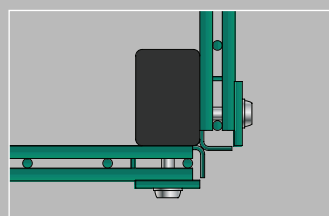
End post



Internal corner post



External corner post



Protek 868 Clamp

Protek 868

Clip



For more details on this product please visit www.knight-fencing.co.uk

Suitable For:

- Schools, Ball Parks
- Sports Facilities
- Retail Parks
- Business Parks

Protek 868

Double wire panel system

The Protek 868 double wire panel fencing system is very versatile and stronger than Protek single wire fencing systems. The easy-to-install flat panel system has a range of applications and comprises twin horizontal wires (8mm in diameter) welded to a 6mm vertical wire.

Posts, clips and fixings

Vandal-resistant fixings help the Protek 868 double wire panel fencing system provide a reasonable level of boundary security. Quality posts and clips secure the panels and allow for variations. The panels can be stepped, helping the fence line to follow the contours of the ground.

Product and finish standards

- Mesh panel wire manufactured to BS 4102 and galvanised to BS EN 10244-2:2001 class D
- Weld strength is 75% of the minimum tensile strength of the wire (tensile range 540-690 N/m²)
- Post material manufactured to BS EN 10210-2:1997 and galvanised to BS EN 10346:2009
- Panels and posts are powder coated to BS EN 13438:2005 (minimum 100 micron)

Options

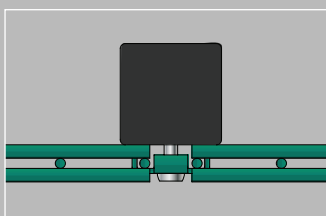
- Panels can be inverted to create flat-top option
- Other heights are available on request

Nominal fence height (m)	Panel size height x width (mm)	Overall length of post (mm)	Post size (mm)	Number of clips	
				Per post	Per corner
1.0	1,030 x 2,506	1,600	60 x 60	3	6
1.2	1,230 x 2,506	1,850	60 x 60	4	8
1.8	1,830 x 2,506	2,400	60 x 60	5	10
2.0	2,030 x 2,506	2,700	60 x 60	6	12
2.4	2,430 x 2,506	3,200	60 x 60	7	14
3.0	3,030 x 2,506	3,900	60 x 60	8	16

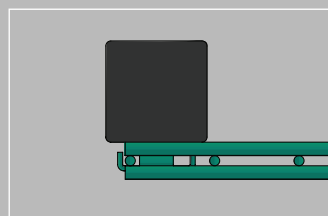
Subject to change

- 1 Mesh panel: 200mm x 50mm mesh size, 1mm x 6mm vertical wire and 2mm x 8mm horizontal wire
- 2 Post size: 60mm x 60mm square hollow section
- 3 Plastic cap: 60mm x 60mm
- 4 M8 x 40 stainless steel security screws
- 5 Durable metal clip

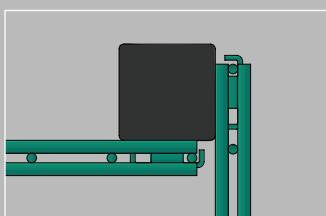
Intermediate post



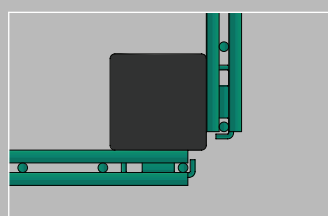
End post



Internal corner post



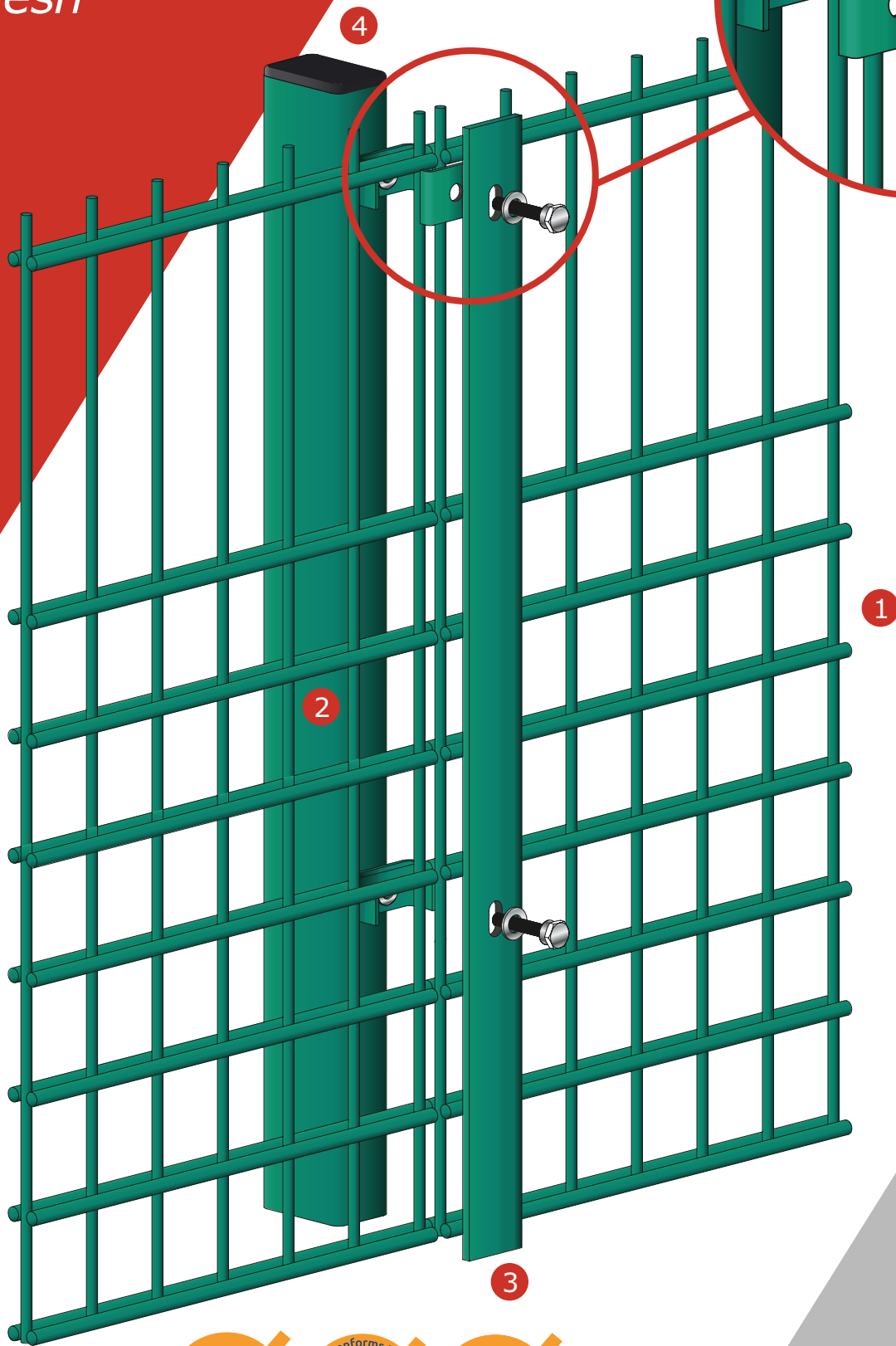
External corner post



KNIGHT
FENCING LTD
Protek 868 Clip

Protek Elite 656 Rebound High Security Mesh

Secured by Design



For more details on this product please visit
www.knight-fencing.co.uk

- Suitable For:
- Schools and Colleges
 - Public Places & Buildings
 - Retail Parks
 - Business Parks

Protek Elite 656 Rebound

Double wire system

The addition of the SR1 accreditation makes the Protek Elite 656 Rebound fencing system an affordable high-security-level option for a range of applications. The system is 2m high. The wire spacing on the lower segment (1200mm) is 66.6mm x 50mm. On the upper segment (800mm), the wire spacing is 200mm x 50mm.

Posts, clamps and fixings

Vandal-resistant fixings help the easy-to-install Protek Elite 656 Rebound double-wire fencing system provide a higher level of boundary security. Quality posts and full-length clamp bars secure the panels and allow for variations. The panels can be stepped, helping the fence line to follow the contours of the ground.

Product and finish standards

- Mesh panel wire manufactured to BS 4102 and galvanised to BS EN 10244-2:2001 class D
- Weld strength is 75% of the minimum tensile strength of the wire (tensile range 540-690 N/m²)
- Post material manufactured to BS EN 10210-2:1997 and galvanised to BS EN 10346:2009
- Panels and posts are powder coated to BS EN 13438:2005 (minimum 100 micron)

Options

- Panels can be inverted to create flat-top option
- Other heights are available on request

Nominal fence height (m)	Panel size height x width (mm)	Post size (mm) Ends/inters	Post size (mm)		Overall length of post (mm)	Number of fixings	
			Internal corner	External corner		Ends/Inters (1 clamp)	Corners (2 clamps)
2.0	2,030 x 2,506	60 x 40	60 x 40	60 x 60	2,700	9	18
2.4**	2,400 x 2,506	60 x 40	60 x 40	60 x 60	3,200	10	20
3.0	3,030 x 2,506	80 x 40	80 x 40	80 x 80	3,900	12	24
3.1*	3,060 x 2,506	80 x 40	80 x 40	80 x 80	3,900	13	26
3.6*	3,660 x 2,506	80 x 40	80 x 40	80 x 80	4,600	15	30
4.0*	4,060 x 2,506	100 x 50	100 x 50	80 x 80	5,100	16	32
4.5*	4,460 x 2,506	100 x 50	100 x 50	80 x 80	5,500	19	38
5.0*	5,060 x 2,506	100 x 50	100 x 50	80 x 80	6,200	21	42
6.0*	6,060 x 2,506	120 x 60	120 x 60	100 x 100	7,500	24	48

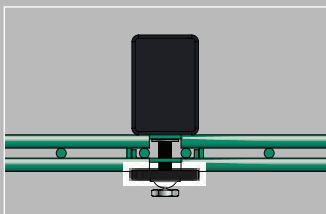
*Made up of multiple panels and clamp bars

**Panel supplied without spikes

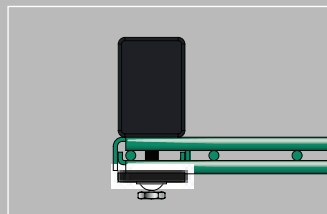
Subject to change

- 1 Mesh panel: lower segment (to 1200mm) 66.6mm x 50mm, higher segment 200mm x 50mm; 1mm x 5mm vertical wire, 2mm x 6mm horizontal wire
- 2 Post size varies with height (see table)
- 3 Clamp bar 40 x 5mm flat bar (full length of mesh panel)
- 4 Plastic cap varies with post size (see table)
- 5 M8 x 40 stainless steel sheer bolts, plus extra front clips behind clamps

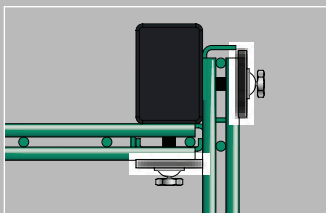
Intermediate post



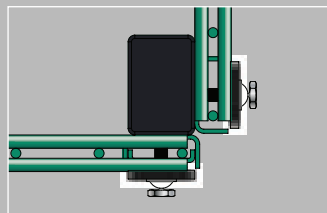
End post



Internal corner post



External corner post



**Protek Elite
656 Rebound**

Protek Spectator Rail Sports Mesh



For more details on this product please visit
www.knight-fencing.co.uk

- Suitable For:
- Running Track
 - Spectator Enclosures
 - School Playgrounds
 - Crowd Control

Protek Spectator Rail

Combined mesh panel and handrail

The Protek Spectator Rail fencing system combines mesh panels and tubular-top handrails. It is ideal for sports areas, offering superior security and visibility. The system is available with Protek 656 and Protek 868 mesh panels and optional extras include kickboards.

Posts, clamps and fixings

Vandal-resistant fixings help the easy-to-install Protek Spectator Rail system provide a higher level of boundary security. Quality posts and full-length clamp bars secure the panels and allow for variations. The panels can be stepped, helping the fence line to follow the contours of the ground.

Product and finish standards Options

- Mesh panel wire manufactured to BS 4102 and galvanised to BS EN 10244-2:2001 class D
- Weld strength is 75% of the minimum tensile strength of the wire (tensile range 540-690 N/m²)
- Post material manufactured to BS EN 10210-2:1997 and galvanised to BS EN 10346:2009
- Panels and posts are powder coated to BS EN 13438:2005 (minimum 100 micron)

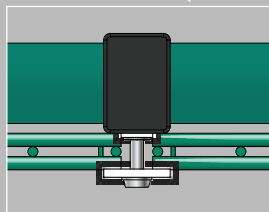
- Standard Protek 868 or 656 panel
- Protek Elite Rebound 868 or 656 panel

Nominal fence height (m)	Panel size height x width (mm)	Post size (mm) Ends/inters	Post size (mm)		Overall length of post (mm)	Number of fixings	
			Internal corner	External corner		Ends/inters (1 clamp)	Corners (2 clamps)
1.2	1,030 x 2,506	60 x 40	100 x 100	100 x 100	1,800	4	8

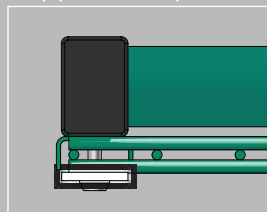
Subject to change

- 1 Mesh panel: 200mm x 50mm mesh size (Protek 656 or Protek 868)
- 2 Clamp bar: 40mm x 5mm flat bar (full length of mesh panel)
- 3 Plastic cap
- 4 M8 x 40 stainless steel security screws

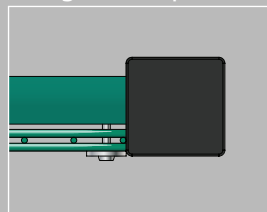
Clipped intermediate post



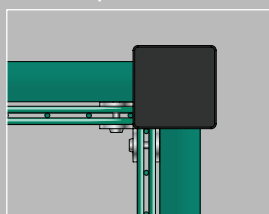
Clipped end post



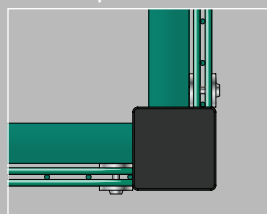
Flanged end post



Flanged internal corner post



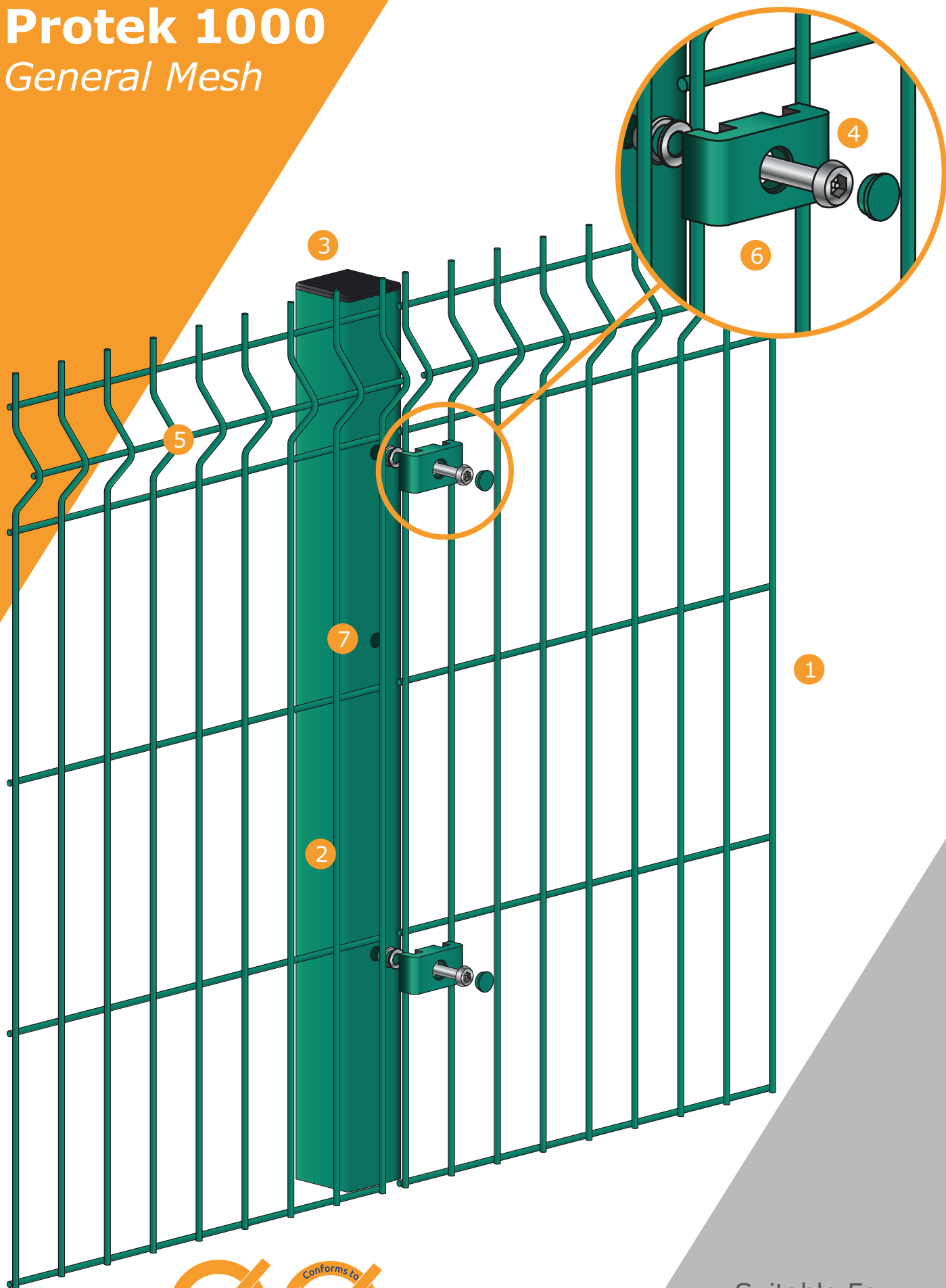
Flanged external corner post



Protek Spectator Rail

Protek 1000

General Mesh



For more details on this product please visit www.knight-fencing.co.uk

- Suitable For:
- School Boundaries
 - Public Areas
 - Retail Parks
 - Perimeter Protection

Protek 1000

Profiled mesh panel system

The Protek 1000 mesh system is a light-duty security option that is commonly used as a general purpose boundary fence. It is aesthetically pleasing with high through-visibility, helping it blend into its surroundings. The welded mesh panels boast horizontal triangular folds that help to form a strong, rigid fence line.

Posts, clips and fixings

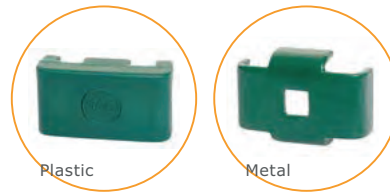
Vandal-resistant fixings help the easy-to-install Protek 1000 fencing system provide a reasonable level of boundary security. Quality posts and clips secure the panels and allow for variations. The panels can be stepped, helping the fence line to follow the contours of the ground.

Product and finish standards

- Mesh panel wire manufactured to BS 4102 and galvanised to BS EN 10244-2:2001 class D
- Weld strength is 75% of the minimum tensile strength of the wire (tensile range 540-690 N/m²)
- Post material manufactured to BS EN 10210-2:1997 and galvanised to BS EN 10346:2009
- Panels and posts are powder coated to BS EN 13438:2005 (minimum 100 micron)

Options

- Plastic or metal clips
- Panels can be inverted to create flat-top option
- Panels can be specified as 2.51m post centres

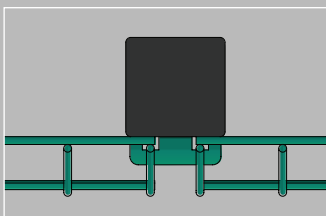


Nominal fence height (m)	Panel size height x width (mm)	No. V bars per panel	Overall length of post (mm)	Post size (mm)	Number of clips	
					Per post	Per corner
1.2	1,230 x 3,005	2	1,800	60 x 60	3	6
1.5	1,530 x 3,005	3	2,100	60 x 60	4	8
1.8	1,730 x 3,005	3	2,400	60 x 60	4	8
2.0	1,930 x 3,005	3	2,700	60 x 60	4	8
2.4	2,330 x 3,005	4	3,150	60 x 60	5	10
3.0	2,930 x 2,455	5	3,900	60 x 60	6	12

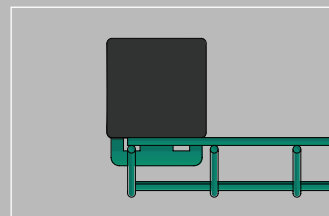
Subject to change

- 1 Mesh panel: 200mm x 50mm mesh size; 5mm wire
- 2 Post size: 60mm x 60mm square hollow section
- 3 Plastic cap - 60mm x 60mm
- 4 M8 x 30 stainless steel security screws
- 5 Triangular folds: 2,3,4 or 5 per panel (depending on height)
- 6 Durable plastic clips or metal clips
- 7 Holes for additional insert top and bottom for stepping purposes

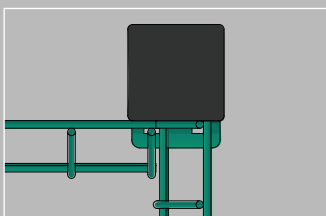
Intermediate post



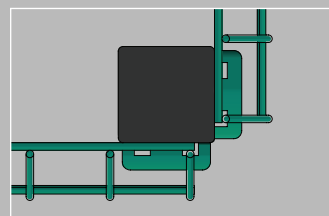
End post



Internal corner post



External corner post



Protek 1000
General Mesh

Protek 2000

General Mesh



For more details on this product please visit www.knight-fencing.co.uk

- Suitable For:
- School Boundaries
 - Public Areas
 - Retail Parks
 - Perimeter Protection
 - Industrial Estates

Protek 2000

Profiled mesh panel system

The Protek 2000 mesh fence system is a medium-level security option that is commonly used at schools and retail parks. It is aesthetically pleasing with high through-visibility, helping it blend into its surroundings. The welded mesh panels boast horizontal triangular folds that help to form a strong, rigid fence line.

Posts, clamps and fixings

Vandal-resistant fixings help the easy-to-install Protek 2000 system provide a higher level of boundary security. Quality posts and full-length clamp bars secure the panels and allow for variations. The panels can be stepped, helping the fence line to follow the contours of the ground.

Product and finish standards Options

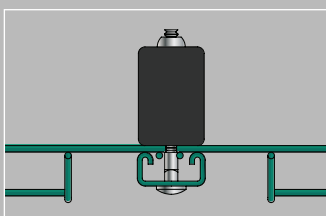
- Mesh panel wire manufactured to BS 4102 and galvanised to BS EN 10244-2:2001 class D
- Weld strength is 75% of the minimum tensile strength of the wire (tensile range 540-690 N/m²)
- Post material manufactured to BS EN 10210-2:1997 and galvanised to BS EN 10346:2009
- Panels and posts are powder coated to BS EN 13438:2005 (minimum 100 micron)
- Panels can be inverted to create flat-top option

Nominal fence height (m)	Panel size height x width (mm)	No. V bars per panel	Overall length of post (mm)	Post size (mm)	Number of fixings	
					Ends/inters (1 clamp)	Corners (2 clamps)
1.8	1,730 x 2,500	3	2,400	60 x 40	4	8
2.0	1,930 x 2,500	3	2,700	60 x 40	4	8
2.4	2,330 x 2,500	4	3,150	60 x 40	5	10
3.0	2,930 x 2,445	5	3,900	80 x 40	6	12

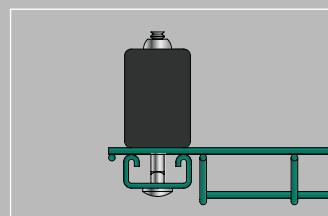
Subject to change

- 1 Mesh panel: 200mm x 50 mm mesh size; 5mm wire
- 2 Post size: varies with height (see table)
- 3 Clamp bar: 41mm x 21mm channel (full length of mesh panel)
- 4 Plastic cap: 60mm x 40mm
- 5 M8 x 100 cup square security bolts, M8 shear nuts
- 6 Triangular folds: 3, 4 or 5 per panel (depending on height)

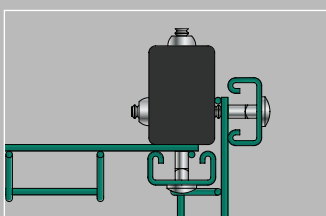
Intermediate post



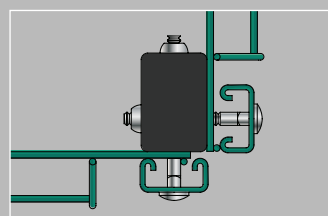
End post



Internal corner post



External corner post



KNIGHT
FENCING LTD

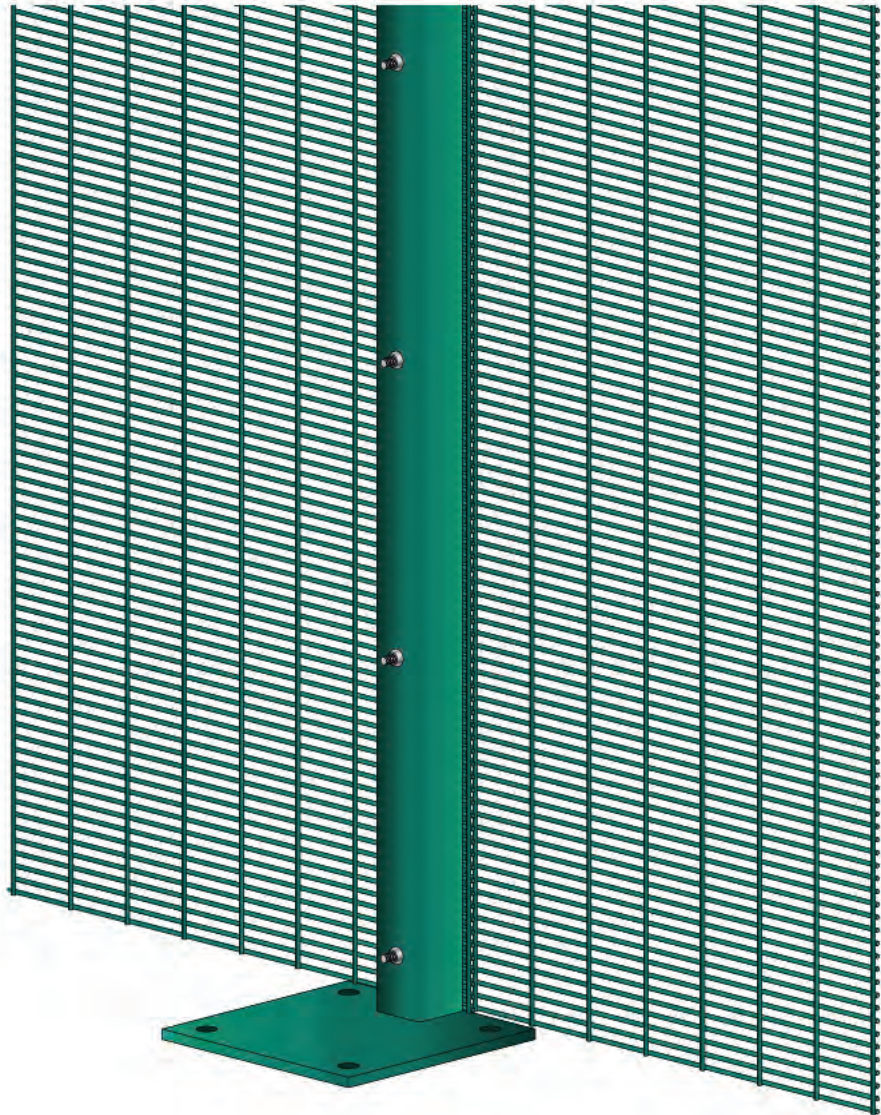
Protek 2000
General Mesh

Non-Standard Fence Options

We know that no two perimeter security fencing jobs are the same. To ensure that our customers get the fencing system that exactly matches their specifications, we offer a range of construction options that can be applied during the manufacturing process.

Base plated

For installation on concrete and other hard surfaces. Posts can be positioned flush with front or back or centrally, or to customer specifications.



Face fix

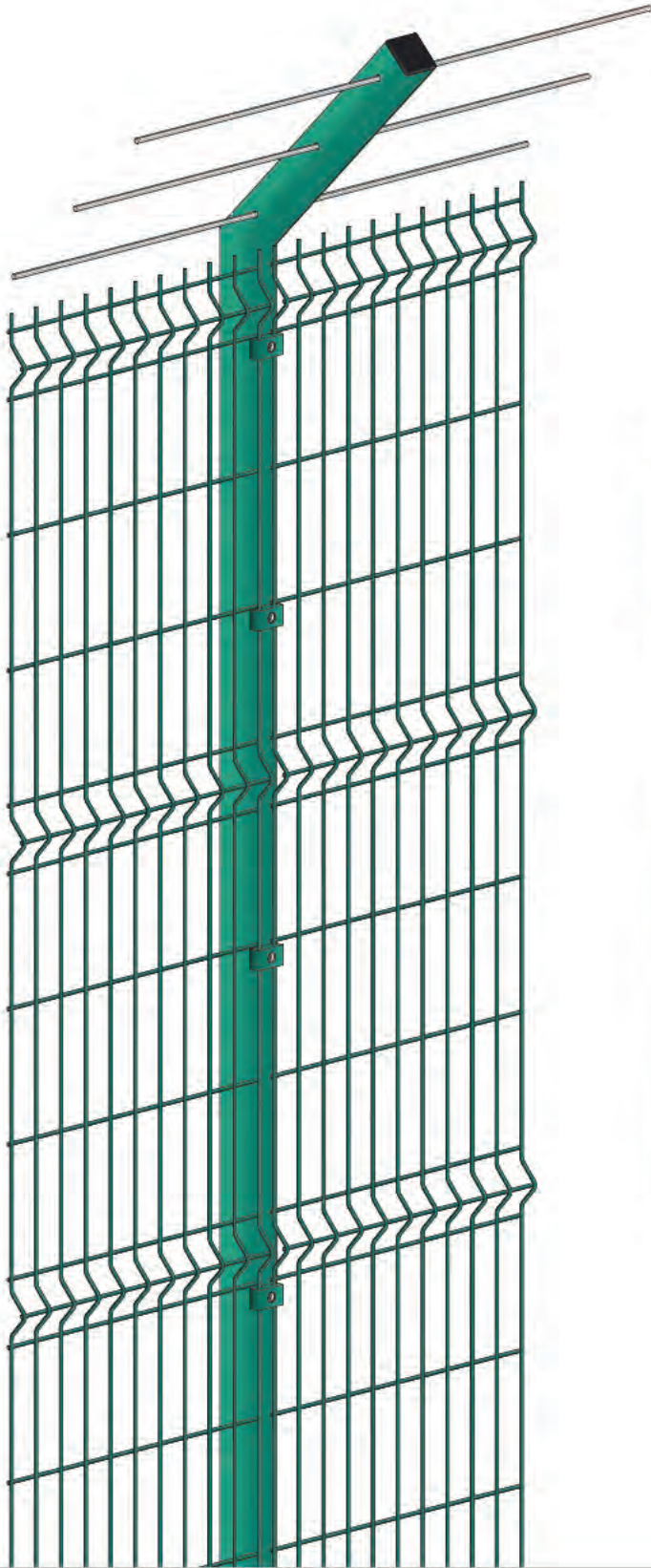
Setting the mesh flush with the back or front of the wall



Cranked post – bottom

Flush with the back or front of the wall. Can be made to customer specifications.

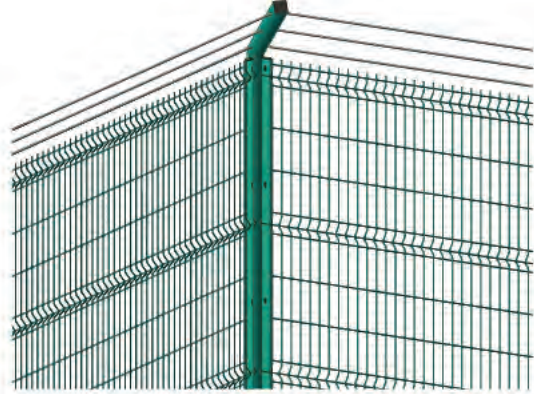




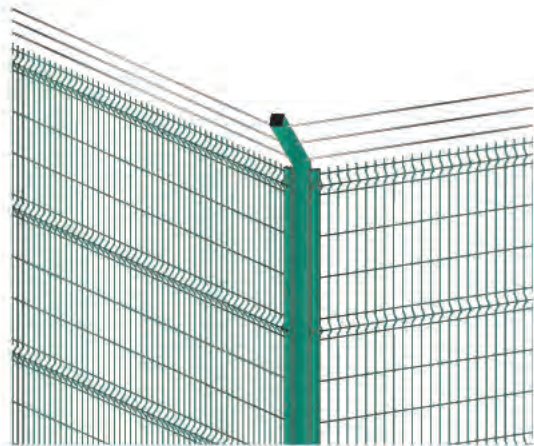
Cranked post – top

Typically used to add extra anti-climb features, such as razor or barbed wire. Can be made to customer specifications.

Cranked post – internal corner



Cranked post – external corner



If you have a project that requires a security fencing solution that is not listed in this guide, please contact us.



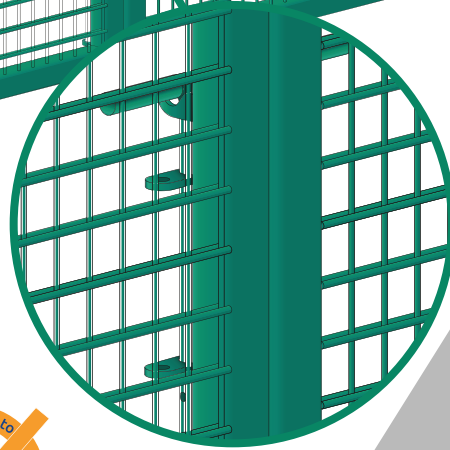
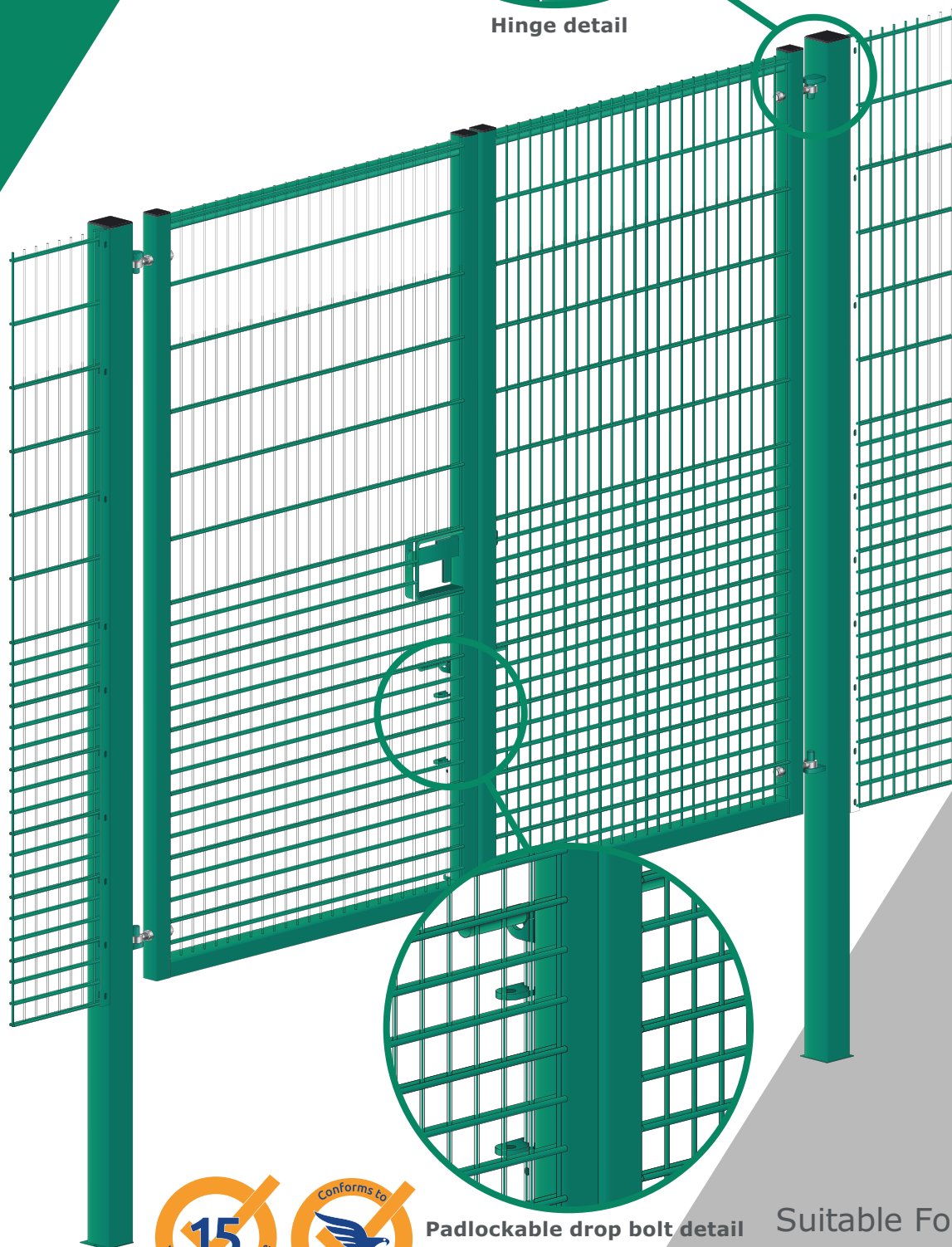
KNIGHT
FENCING LTD

**Non-Standard
Fence Options**

Protek 656 & 868 Rebound Standard Gates



Hinge detail



Padlockable drop bolt detail



Suitable For:
Protek 656 and 868
Rebound fencing
panels (see pages 3-6)

For more details on this product please visit
www.knight-fencing.co.uk

Protek 656 & 868 Rebound Standard Gates

Double leaf and single leaf

Anti-climb Protek Rebound 656 and 868 gates are available in a range of heights and widths. We stock single and double leaf gates. We can also make the gates to customer specifications.

The hinges on the gates are inverted to prevent lift off. Double leaf gates come with drop bolts and ground sockets. Drop bolts can be added to single leaf gates at the manufacturing stage.

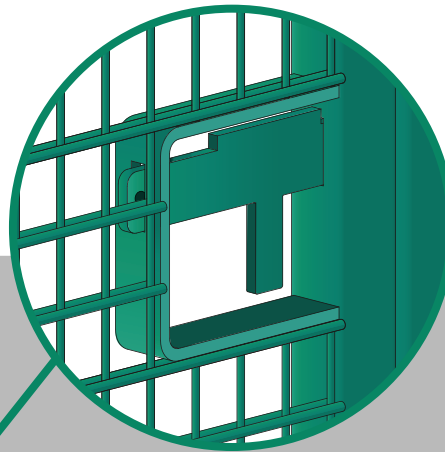
Product and finish standards

- Mesh panel wire manufactured to BS 4102 and galvanised to BS EN 10244-2:2001 class D
- Weld strength is 75% of the minimum tensile strength of the wire (tensile range 540-690 N/m²)
- Post material manufactured to BS EN 10210-2:1997 and galvanised to BS EN 10346:2009
- Panels and posts are powder coated to BS EN 13438:2005 (minimum 100 micron)
- All welding carried out in accordance with BS EN 1011-1 and BS EN 1011-2 by qualified welders (BS EN 287-1)

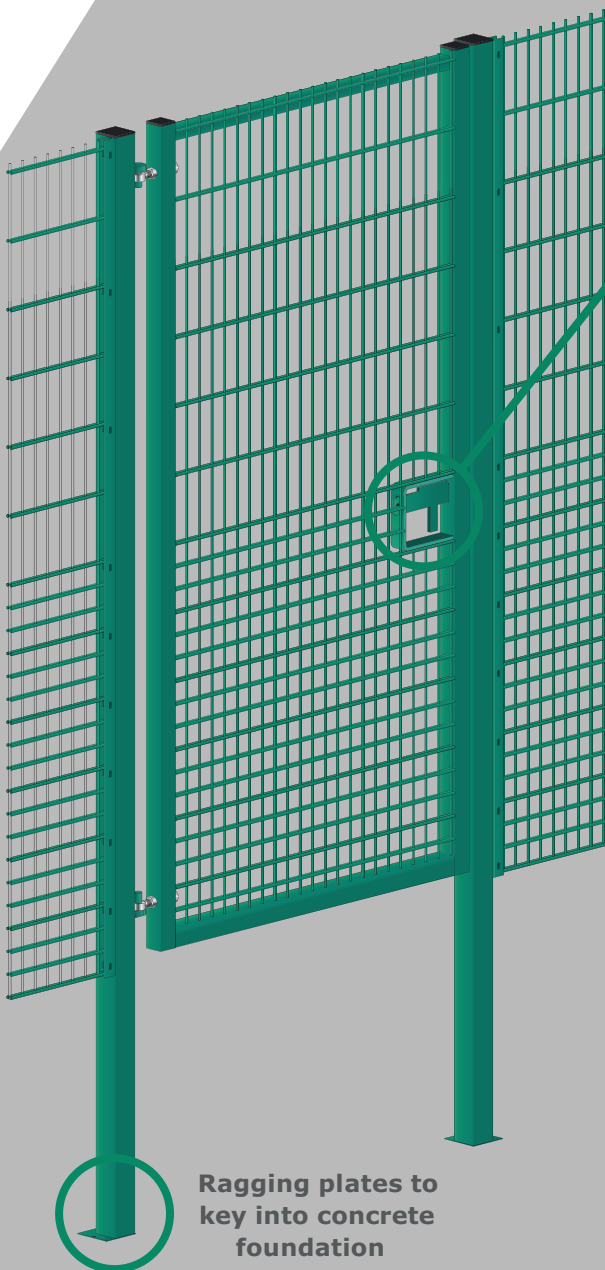
Mesh is welded onto all gate frames. All gates come with a padlockable slide latch (padlock not provided).

Options

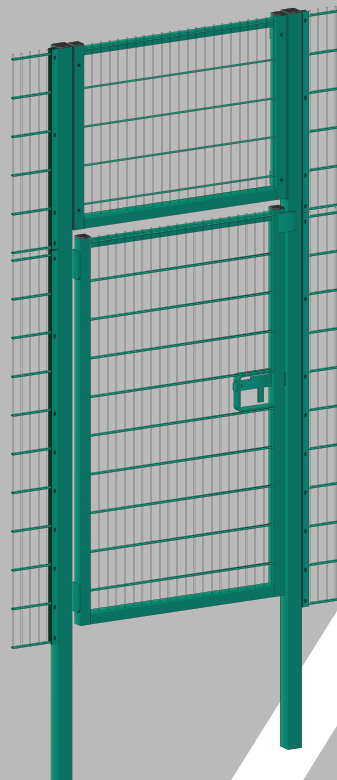
- Full rebound lintel panels
- A range of gate accessories (see pages 17-18)
- Bespoke manufacturing options (see page 19)



Padlockable slide bolt detail



Ragging plates to key into concrete foundation



With lintel panel



Protek 656 & 868
Rebound Standard Gates

Protek Spectator Rail Gates

Sports Gates



Hinge detail



Padlockable
drop bolt detail



For more details on this product please visit
www.knight-fencing.co.uk

Suitable For:

Protek Spectator rail fencing
panels (see page 8)

Protek Spectator Rail Gates

Double leaf and single leaf

Protek Spectator rail gates are designed to ensure the safety of sports fans. Strong and aesthetically pleasing, the gates are available in double and single leaf formats, and complement the look and flow of Protek Spectator rail fencing panels.

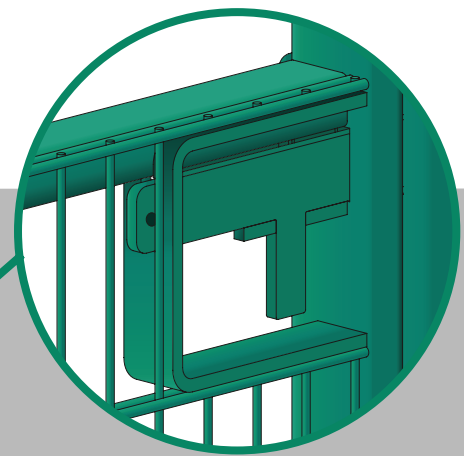
Product and finish standards

- Mesh panel wire manufactured to BS 4102 and galvanised to BS EN 10244-2:2001 class D
- Weld strength is 75% of the minimum tensile strength of the wire (tensile range 540-690 N/m²)
- Post material manufactured to BS EN 10210-2:1997 and galvanised to BS EN 10346:2009
- Panels and posts are powder coated to BS EN 13438:2005 (minimum 100 micron)
- All welding carried out in accordance with BS EN 1011-1 and BS EN 1011-2 by qualified welders (BS EN 287-1)

Mesh is welded onto the frames of all Protek Spectator rail gates. We stock a range of locks and gate accessories.

Options

- A range of gate accessories (see pages 17-18)
- Bespoke manufacturing options (see page 19)



Padlockable slide bolt detail



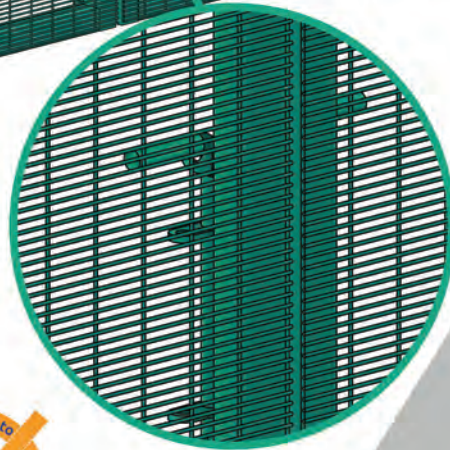
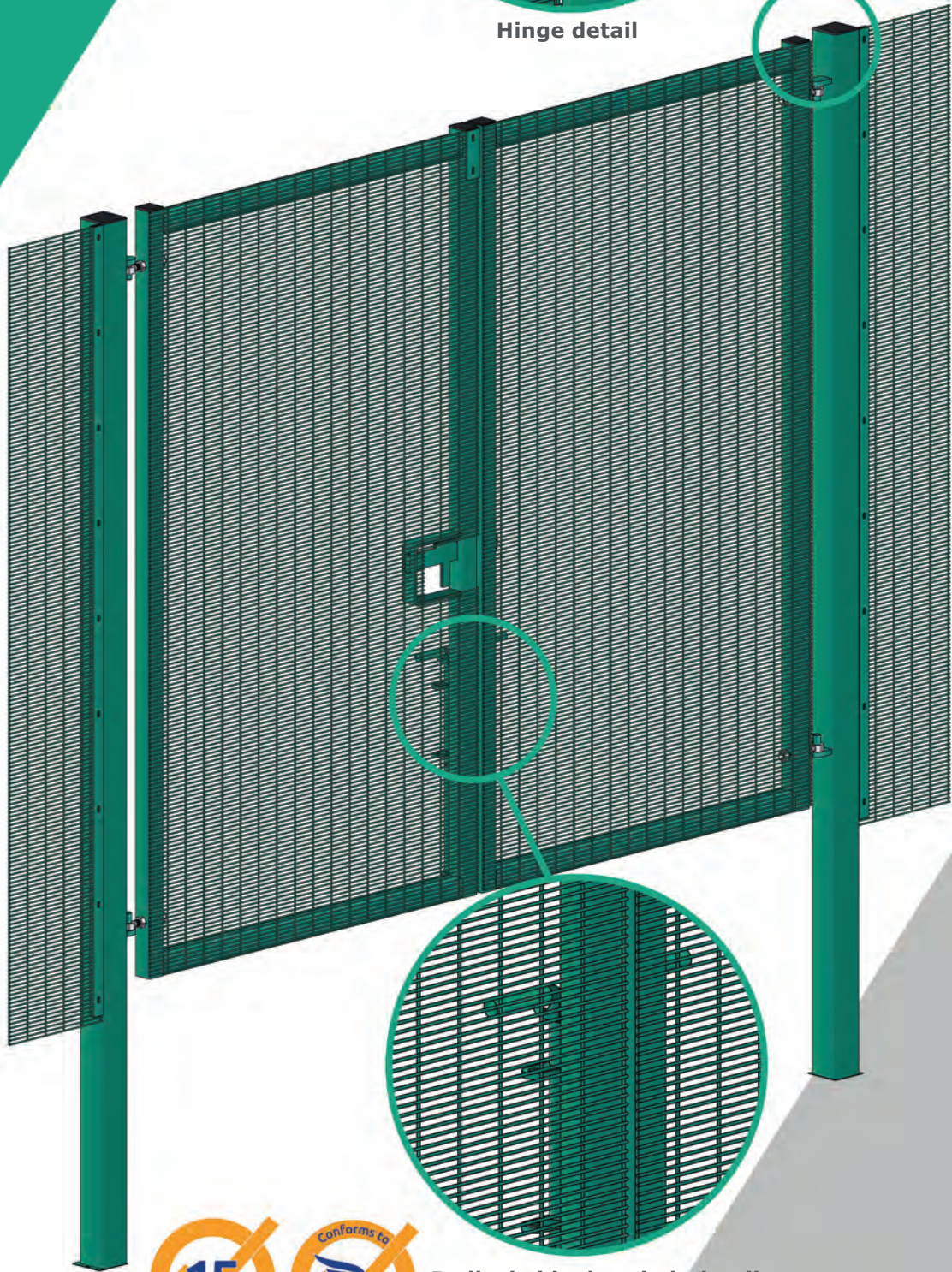
**Protek Spectator
Rail Gates**

Protek 358

Standard Gates



Hinge detail



Padlockable drop bolt detail



For more details on this product please visit
www.knight-fencing.co.uk

Suitable For:
Protek 358 panel
systems (see page 2)

Protek 358 Standard Gates

Double leaf and single leaf

Anti-climb Protek 358 gates are available in a range of heights and widths. We stock single and double leaf gates. We can also make the gates to customer specifications.

The hinges on the gates are inverted to prevent lift off. Double leaf gates come with drop bolts and ground sockets. Drop bolts can be added to single leaf gates at the manufacturing stage.

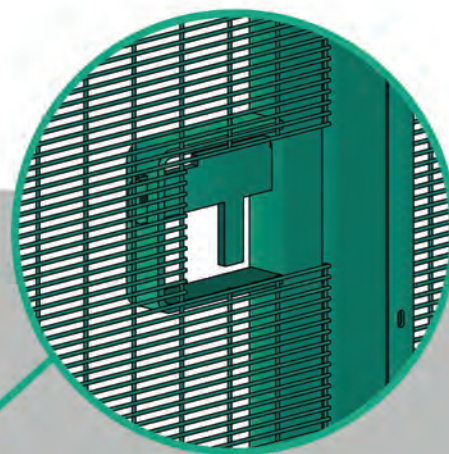
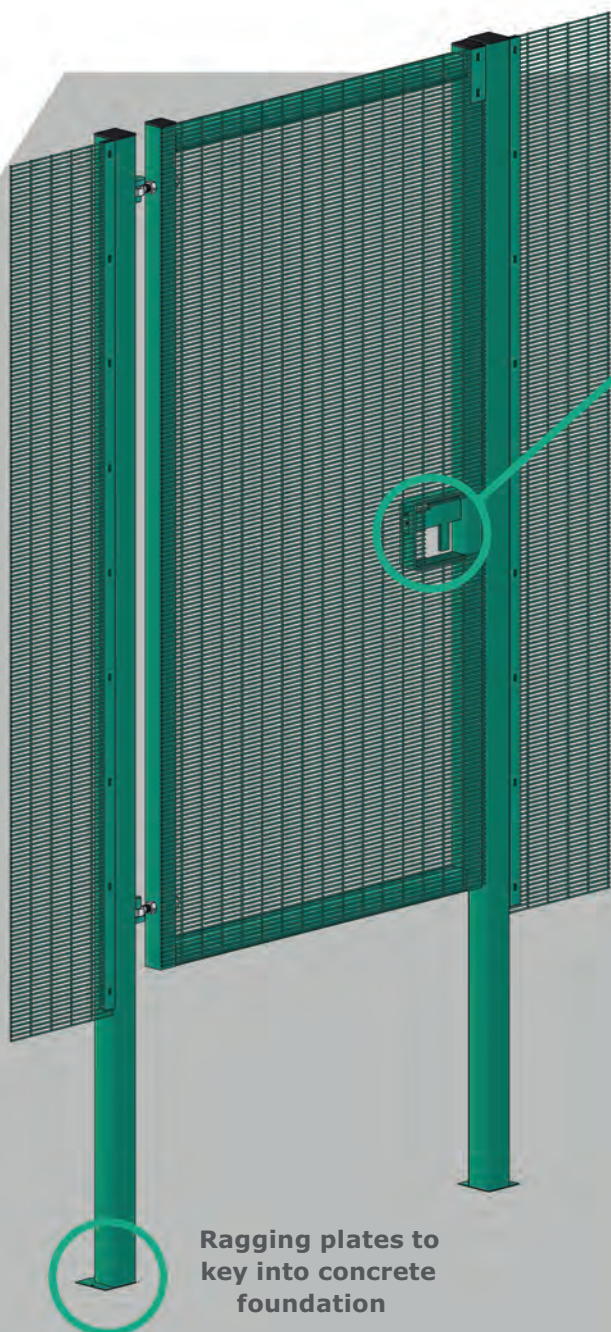
Product and finish standards

- Mesh panel wire manufactured to BS 4102 and galvanised to BS EN 10244-2:2001 class D
- Weld strength is 75% of the minimum tensile strength of the wire (tensile range 540-690 N/m²)
- Post material manufactured to BS EN 10210-2:1997 and galvanised to BS EN 10346:2009
- Panels and posts are powder coated to BS EN 13438:2005 (minimum 100 micron)
- All welding carried out in accordance with BS EN 1011-1 and BS EN 1011-2 by qualified welders (BS EN 287-1)

Mesh is welded onto all gate frames. All gates come with a padlockable slide latch (padlock not provided).

Options

- Protek 358 Profile mesh is also available for standard gates
- A range of gate accessories (see pages 17-18)
- Bespoke manufacturing options (see page 19)



Padlockable slide bolt detail

Ragging plates to key into concrete foundation



Protek 358
Standard Gates

Protek 656 & 868 Standard Gates



Hinge detail



Padlockable drop bolt detail



For more details on this product please visit
www.knight-fencing.co.uk

Suitable For:
Protek 656 and 868
mesh panel systems
(pages 3-6)

Protek 656 & 868 Standard Gates

Double leaf and single leaf

Strong and aesthetically pleasing, Protek 656 and 868 standard gates are available in a range of heights and widths. We stock single and double leaf gates. We can also make the gates to customer specifications.

The hinges on the gates are inverted to prevent lift off. Double

leaf gates come with drop bolts and ground sockets. Drop bolts can be added to single leaf gates at the manufacturing stage.

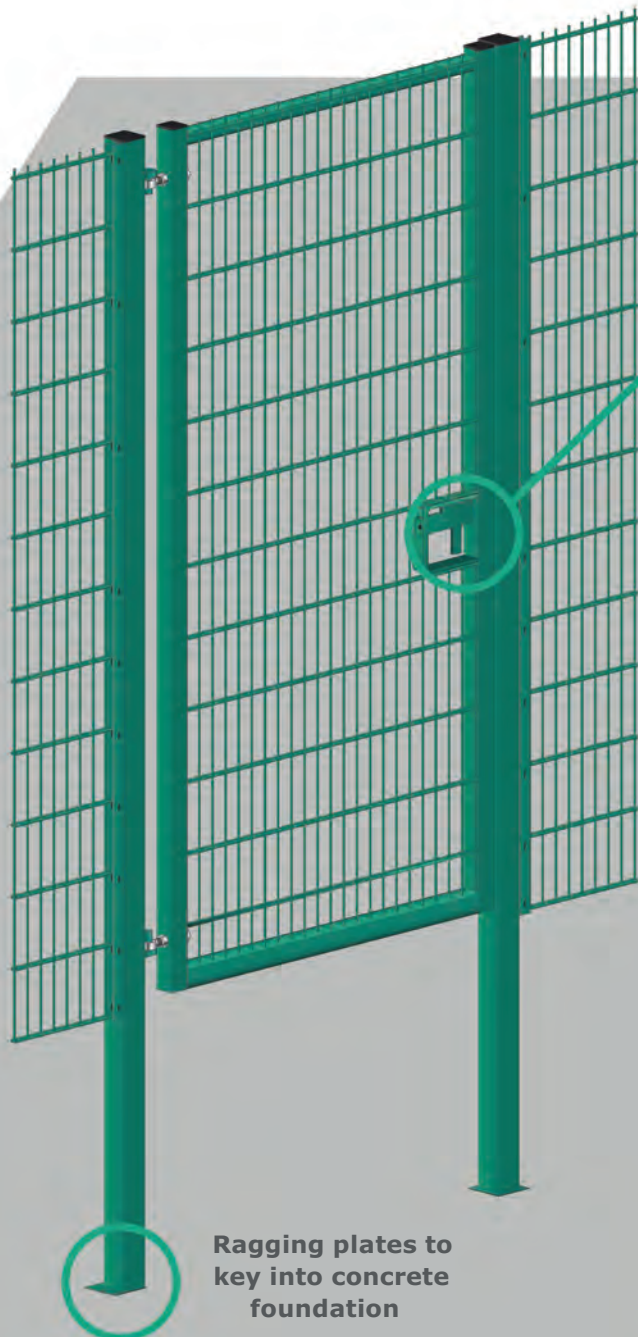
Mesh is welded onto all gate frames. All gates come with a padlockable slide latch (padlock not provided).

Product and finish standards

- Mesh panel wire manufactured to BS 4102 and galvanised to BS EN 10244-2:2001 class D
- Weld strength is 75% of the minimum tensile strength of the wire (tensile range 540-690 N/m²)
- Post material manufactured to BS EN 10210-2:1997 and galvanised to BS EN 10346:2009
- Panels and posts are powder coated to BS EN 13438:2005 (minimum 100 micron)
- All welding carried out in accordance with BS EN 1011-1 and BS EN 1011-2 by qualified welders (BS EN 287-1)

Options

- A range of gate accessories (see pages 17-18)
- Bespoke manufacturing options (see page 19)



Padlockable slide bolt detail



Protek 656 & 868
Standard Gates

Protek 1000 & 2000 Standard Gates



Hinge detail



Padlockable drop bolt detail



For more details on this product please visit
www.knight-fencing.co.uk

Suitable For:
Protek 1000 and 2000
mesh panel systems
(see pages 9-10)

Protek 1000 & 2000 Standard Gates

Double leaf and single leaf

Vandal-resistant Protek 1000 and 2000 gates are available in a range of heights and widths. We stock single and double leaf gates. We can also make the gates to customer specifications.

The hinges on the gates are inverted to prevent lift off. Double

leaf gates come with drop bolts and ground sockets. Drop bolts can be added to single leaf gates at the manufacturing stage.

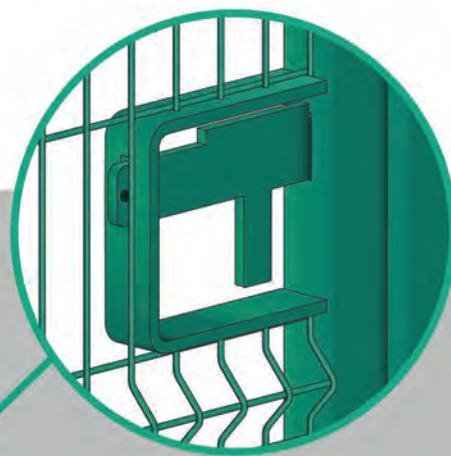
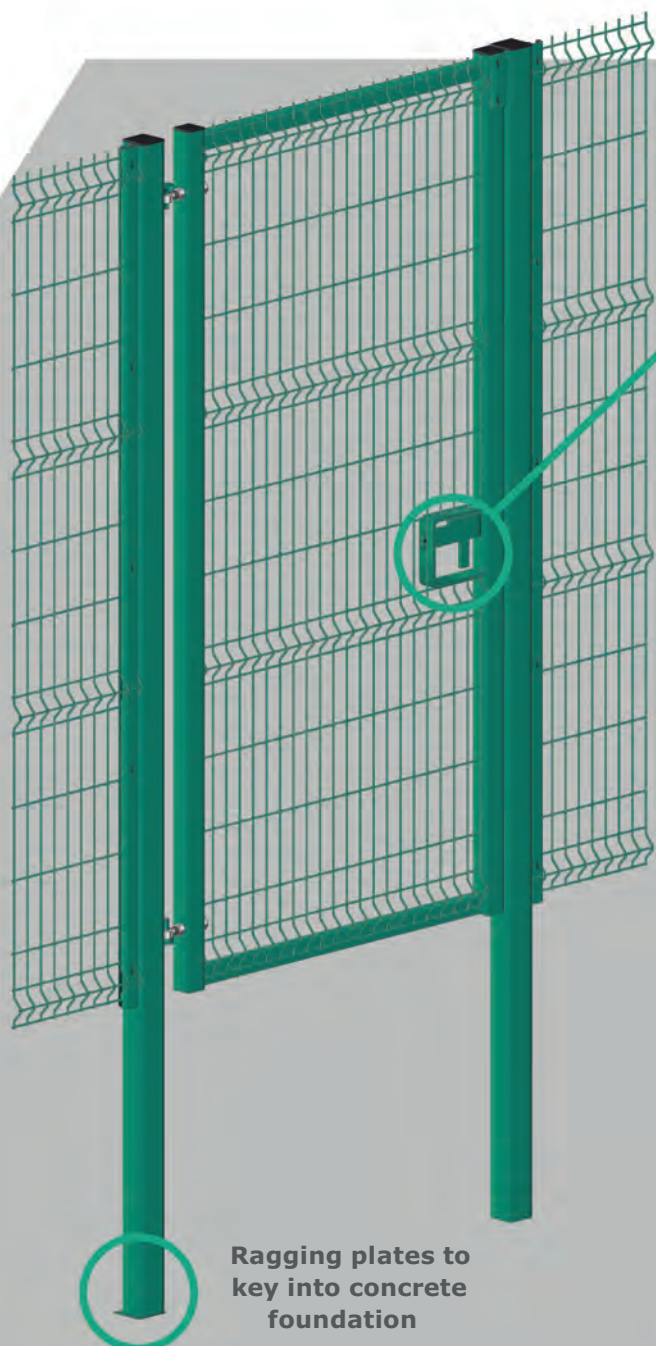
Mesh is welded onto all gate frames. All gates come with a padlockable slide latch (padlock not provided).

Product and finish standards

- Mesh panel wire manufactured to BS 4102 and galvanised to BS EN 10244-2:2001 class D
- Weld strength is 75% of the minimum tensile strength of the wire (tensile range 540-690 N/m²)
- Post material manufactured to BS EN 10210-2:1997 and galvanised to BS EN 10346:2009
- Panels and posts are powder coated to BS EN 13438:2005 (minimum 100 micron)
- All welding carried out in accordance with BS EN 1011-1 and BS EN 1011-2 by qualified welders (BS EN 287-1)

Options

- The gates can be also be used with Protek 2000 privacy panels
- A range of gate accessories (see pages 17-18)
- Bespoke manufacturing options (see page 19)



Padlockable slide bolt detail

Raggings plates to key into concrete foundation



Protek 1000 & 2000
Standard Gates

Gate Accessories

- ProtekTor Lock™
- Standard key lock
- Single digital lock
- Double digital lock
- Digital lock with panic latch
- Standard panic latch
- Panic latch and padlock shroud
- Self-close bottom hinge
- Maglock
- Standard slide bolt
- Locking drop bolt

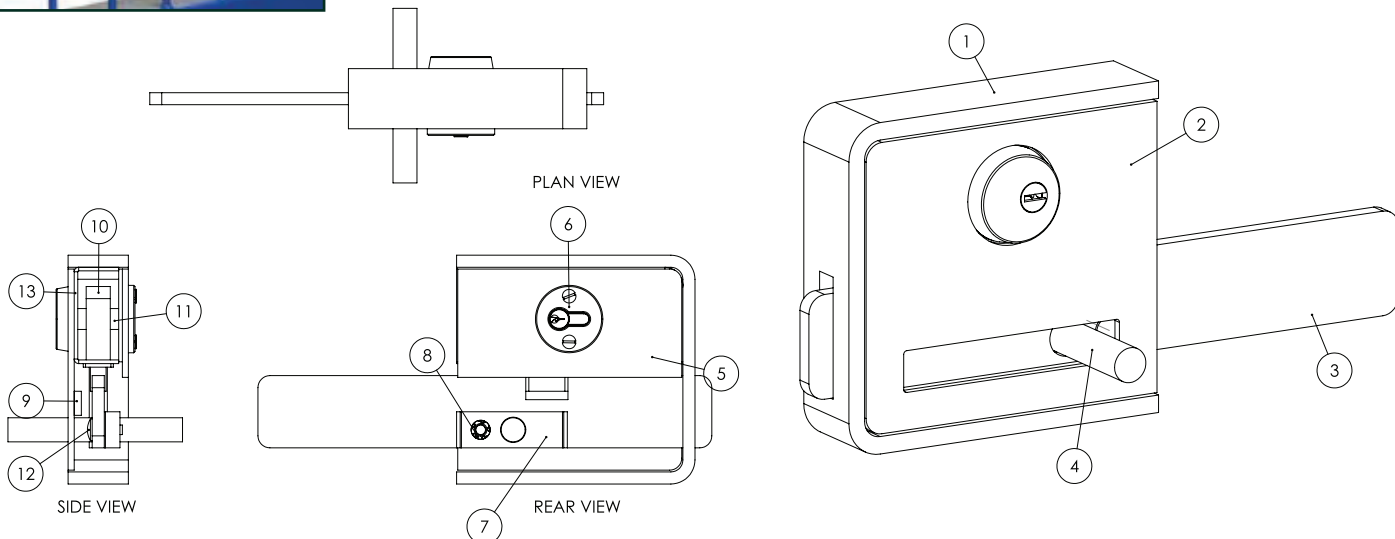




ProtekTor Lock™

The ProtekTor Lock™ boasts a combination mortice lock and a slide-bolt mechanism. It is designed to suit high-security SR1-rated Protek Elite gates and exceeds SR2 requirements.

In addition, the ProtekTor Lock™ is the only key lock that can be built into our full range of gates, including double leaf gates.



- | | |
|---|---|
| 1 ProtekTor Lock surround | 8 M8 Kinmar stainless steel removable nut |
| 2 Front plate - fully welded to surround | 9 Assa Abloy mortice lock |
| 3 ProtekTor slide bar | 10 M8 Kinmar stainless steel removable nut |
| 4 Slide handle | 11 70mm Yale anti-snap cylinder |
| 5 Back plate - fully welded to surround | 12 M8 stainless cup square bolt |
| 6 Mul-T-Lock cylinder protector | 13 Mortice lock housing (2 parts) |
| 7 Handle mount to slide | |



Standard key lock

This lock is recommended for industrial gates. It boasts aluminium housing and a stainless steel mechanism. Built-in bolt adjustability ensures that the locking mechanism is perfectly aligned - the steel deadbolt has a 23mm throw that guarantees secure locking. The lock comes with aluminium handles as standard.



Single digital lock

This stainless-steel mechanical-code lock offers multiple locking options. It does not require batteries or a power supply, making it easy to build into any access control system.

Built-in bolt adjustability ensures that the locking mechanism is perfectly aligned and guarantees secure locking.



Gates Accessories

Gates Accessories

Digital lock with panic latch

This mechanical-code lock with panic latch boasts aluminium housing and a stainless steel mechanism.



Double digital lock

This mechanical-code lock does not require batteries or a power supply, making it easy to build into any access control system. It boasts aluminium housing and a stainless steel mechanism. Built-in bolt adjustability ensures that the locking mechanism is perfectly aligned – the steel deadbolt has a 23mm throw that guarantees secure locking.



Standard panic latch

The standard panic latch features a push-set mechanism instead of the regular handle. One side of the unit is blinded. This facilitates the opening of the lock with a push movement.



Panic latch and padlock shroud

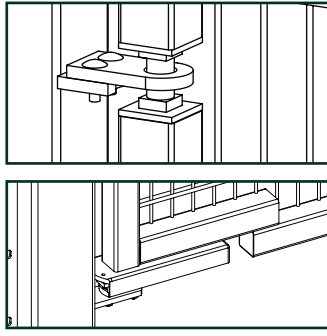
The padlock shroud is an effective way of protecting a panic latch or padlock from being tampered with.



Panic latch shroud



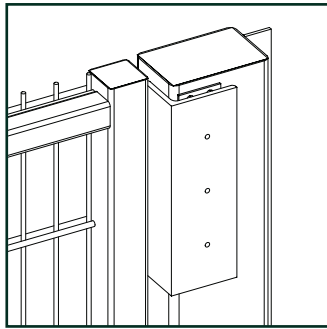
Padlock shroud



Bottom hinge self close

The bottom-hinge mechanism can be incorporated into any gate to provide safe, reliable self-closing. It is suitable for gates up to 120kg. No power supply is required.

This unobtrusive and vandal resistant self-closing mechanism is fitted underneath the gate. It also acts as a load-bearing lower hinge.



Maglock

The Maglock magnetic locking mechanism is weather resistant and highly durable. The mechanism electronics are securely housed in stainless steel casing.



Standard slide bolt

This slide bolt is fitted as standard to all our gates unless an alternative locking mechanism is specified. The design allows for a padlock to be fitted in one of two positions.



Locking drop-bolt

The standard drop bolt secures gates in the open or closed position.

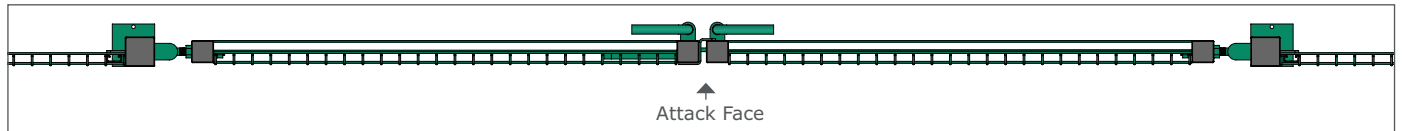


Gates Technical

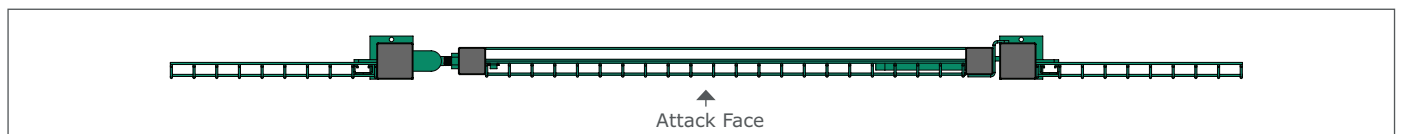
We offer a range of bespoke gate manufacturing options to suit the needs of our customers. A few examples are presented below. For more details, please contact our team.

Gate configuration - plan view

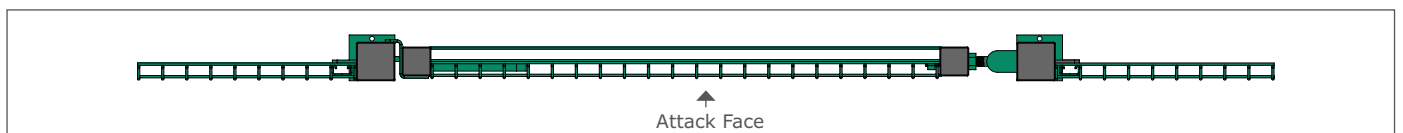
Double leaf



Single leaf: left-hand hanging

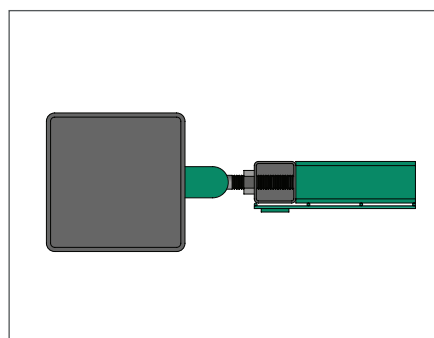
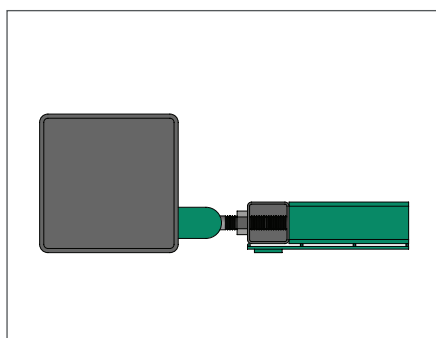


Single leaf: right-hand hanging

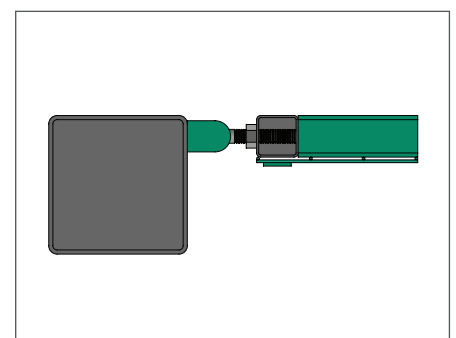


Gate leaf position with post

Flush with front (preferred option) Centre

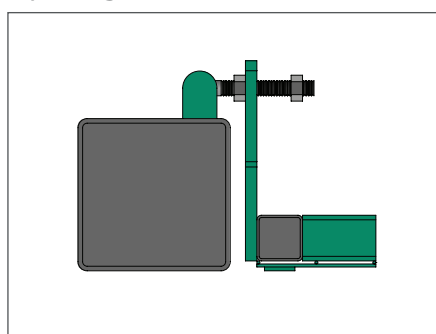


Pushed to back

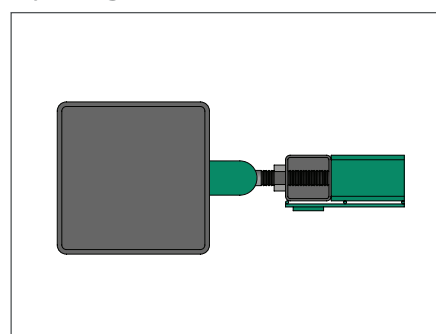


Hinge swing options

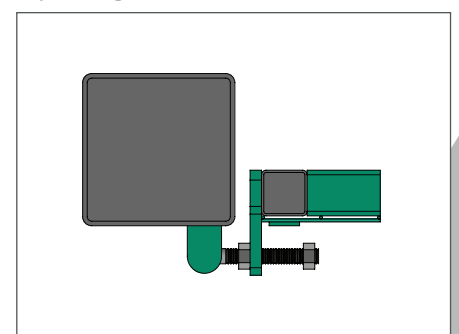
Opening in - 180°



Opening in and out - 90°



Opening out - 180°

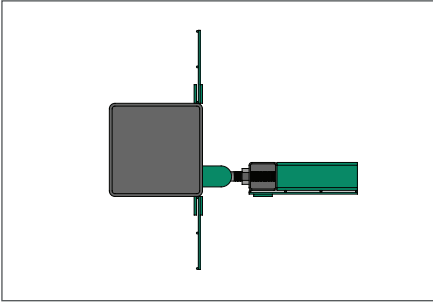


Mesh configuration in relation to gate

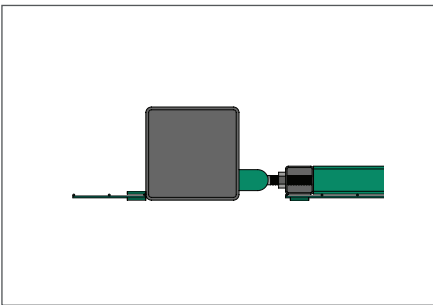
(Hinge position can be adjusted to align with mesh)

Left hand post

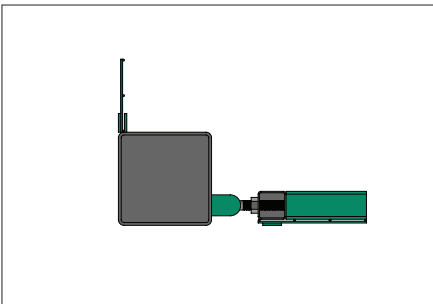
Lugged front and back



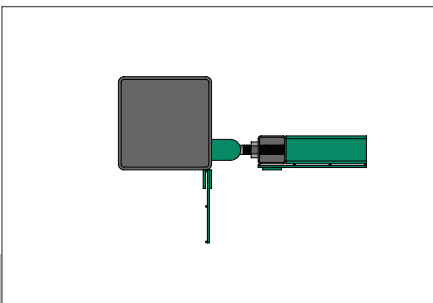
Lugged in line with mesh



External corner/ lugged to back

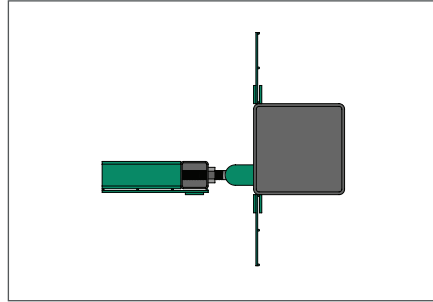


Internal corner/ lugged to front

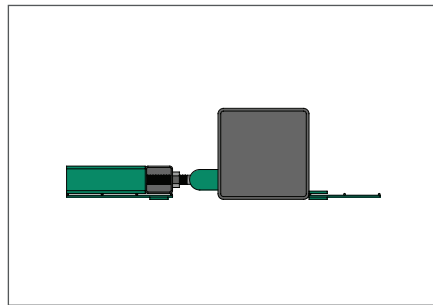


Right hand post

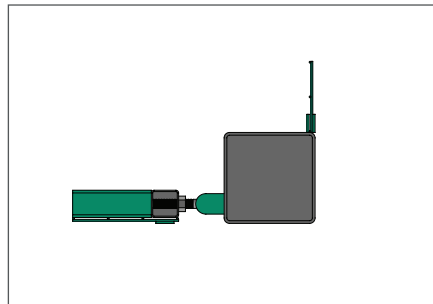
Lugged front and back



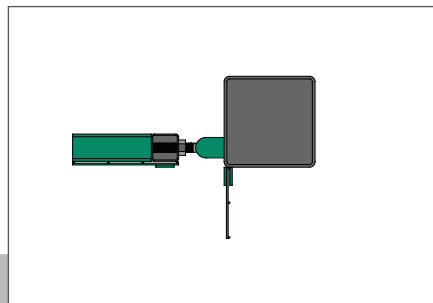
Lugged in line with mesh



External corner/ lugged to back



Internal corner/ lugged to front



KNIGHT
FENCING LTD

Bespoke manufacturing
options



KNIGHT
FENCING LTD

01243 641272 | 01579 529298
info@knight-fencing.co.uk
www.knight-fencing.co.uk