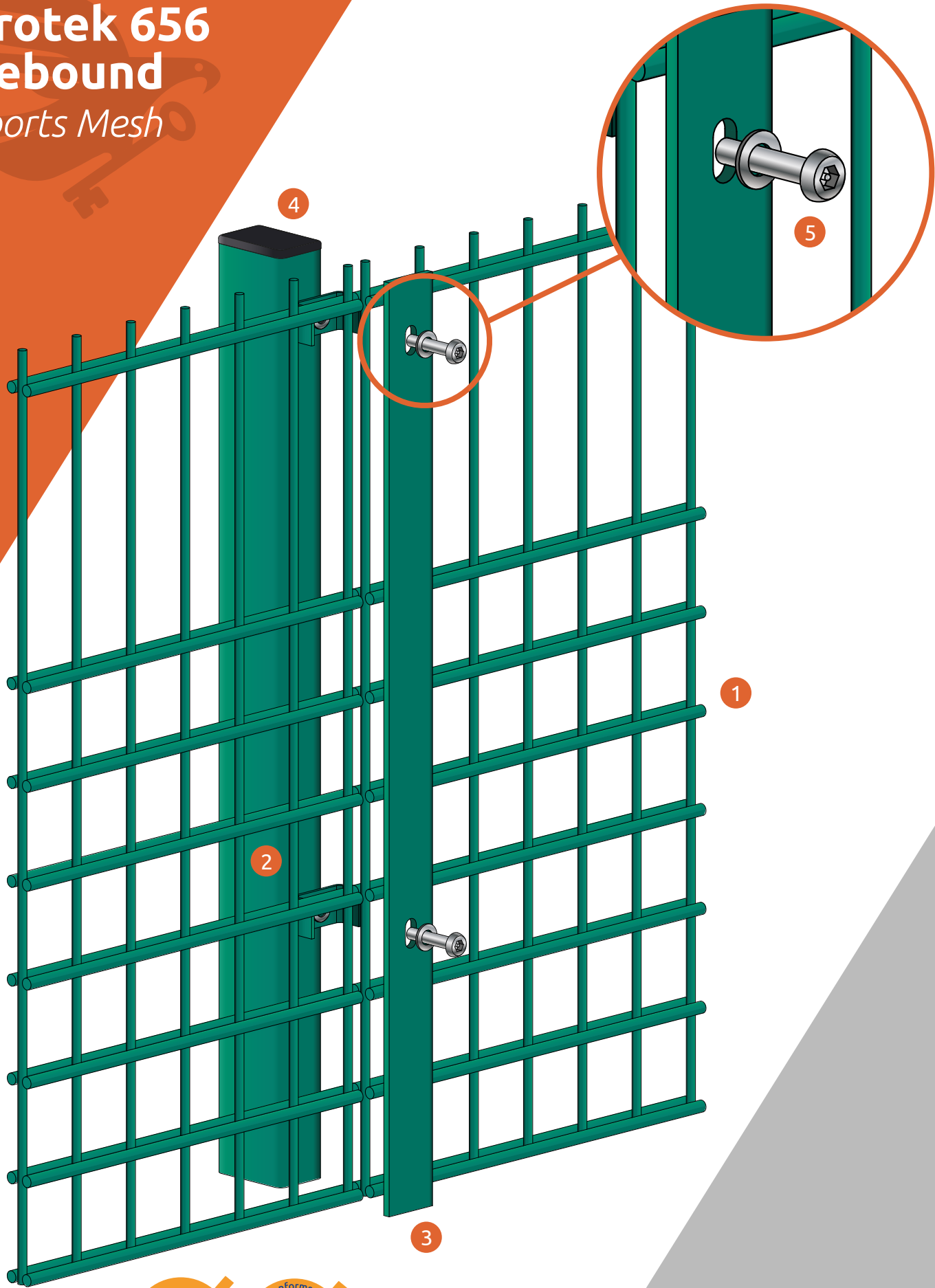


# Protek 656 Rebound Sports Mesh



For more details on this product please visit our website:  
[www.alexandrasecurity.com/sports-mesh](http://www.alexandrasecurity.com/sports-mesh)

Suitable For:  
Multi-use games area,  
Schools and Sports pitches

## Protek 656 Rebound

### Double Wire System

The Protek 656 Rebound mesh fence system has been designed for use around multi-use ball game areas. The standard Protek 656 Rebound Panel is 2.0m high with the wire spacing on the lower 1200mm of the panel being 66.6 x 50mm and the remaining 800mm above being 200 x 50mm. The closer wire centres on the lower part of the panel give it high rebound properties, helping the ball to rebound back into the court.

### Product and Finish Standards

- Mesh panel wire manufactured to BS 4102 and galvanised to BS EN 10244-2:2001 class D, weld strength is 75% of the minimum tensile strength of the wire (tensile range 540-690 N/m2)
- Post material manufactured to BS EN 10210-2:1997 and galvanised to BS EN 10346:2009
- Panels & Posts are powder coated to BS EN 13438:2005 (min 100 micron)

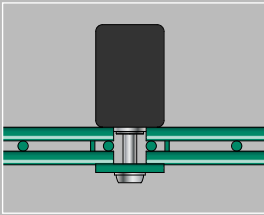
Nominal Fence Height (m)	Panel Size Height x Width (mm)	Post Size (mm) Ends/Iners	Post Size (mm)		Overall Length of Post (mm)	Number of Fixings	
			Internal Corner	External Corner		Ends/Iners (1 Clamp)	Corners (2 Clamps)
2.0	2,030 x 2,506	60 x 40	60 x 40	60 x 60	2,700	9	18
2.4**	2,400 x 2,506	60 x 40	60 x 40	60 x 60	3,200	10	20
3.0	3,030 x 2,506	80 x 40	80 x 40	80 x 80	3,900	12	24
3.1*	3,060 x 2,506	80 x 40	80 x 40	80 x 80	3,900	13	26
3.6*	3,660 x 2,506	80 x 40	80 x 40	80 x 80	4,600	15	30
4.0*	4,060 x 2,506	100 x 50	100 x 50	80 x 80	5,100	16	32
4.5*	4,460 x 2,506	100 x 50	100 x 50	80 x 80	5,500	19	38
5.0*	5,060 x 2,506	100 x 50	100 x 50	80 x 80	6,200	21	42
6.0*	6,080 x 2,506	120 x 60	120 x 60	100 x 100	7,500	24	48

\*Made of multiple panels and clamp bars      \*\*Panel supplied without spikes

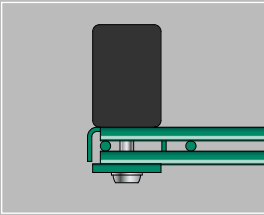
Subject to change

- 1 Mesh panel - mesh size 66.6 x 50mm up to 1200mm high then wire spacing at 200 x 50mm - 1 x 5mm vertical and 2 x 6mm horizontal wire
- 2 Post size varies with height (see table)
- 3 Clamp bar 40 x 5mm flat bar (full length of mesh panel)
- 4 Plastic cap varies with post size (see table)
- 5 M8 x 40 Stainless steel security screw

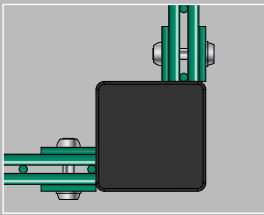
Intermediate post



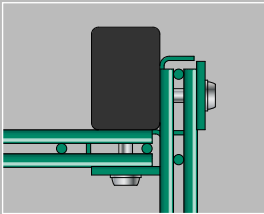
End post



Flanged external corner



Clipped internal corner post



Clipped external corner post

